

A few notes about PDF patterns from Designs by Jude. . . .

This PDF pattern requires legal size paper (8.5" x 14") or A4 size paper (8.27" x 11.69", 210mm x 297mm). It will **not** print on standard letter.

Patterns containing larger pieces will need to be taped together before cutting out the fabric.

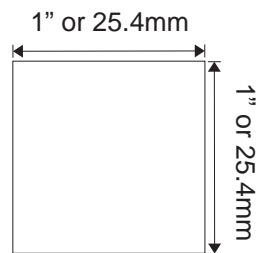
Be advised that this document needs to be printed to it's original scale. Please ensure that the printing options below are **not** selected.

Do Not: Rotate and Center, Fit to Page, Reduce to Fit or adjust the scale of this document.

Refer to the scale marker below to ensure that this copy is printed at the correct scale.

This PDF pattern is not licensed for commercial use and may not be shared, duplicated or distributed.

2016 Designs by Jude, All RIGHTS RESERVED. Personal use only. Not licensed for commercial use.



Fletcher Pattern Company
www.fletcherpatterncompany.com

Orient Dream
for Tyler



designed by
Gary Fletcher

\$12.95us



Notions and Fabric

Blouse:	Satins, lightweight sutings crepes
Lining:	Batiste, china silk
Skirt:	Satins, silks
Train:	Satins, silks
Train Overlay:	Satins Silks and tulle
Collar:	1" wide lace
Cuffs:	1" wide lace
Notions:	6ct. 1/8" half ball buttons, 3ct. 4/0 snap sets, 1ct. 4 1/2" " doll zipper trimmed to size, matching thread

General Cutting and Marking Directions

1. Lay out all pieces following grain lines on pattern. Grain lines are marked with a straight line with an arrow on each end. Cut the number indicated on the pattern.
2. Cut notches no deeper than 1/8" or use disappearing marker. Seam allowances are 1/4" unless otherwise noted on the pattern or in the instructions.
3. In un-lined garments, finish seams with an overlock or zig zag stitch.
4. You will get the most professional results by following a couple of recommendations.
 - Press the garment as you work through each step.
 - Press seams open where applicable.
 - Fit gowns and skirts to the doll and give a final pressing with a clothes steamer.

RST = Right Sides Together

WST = Wrong Sides Together

Blouse

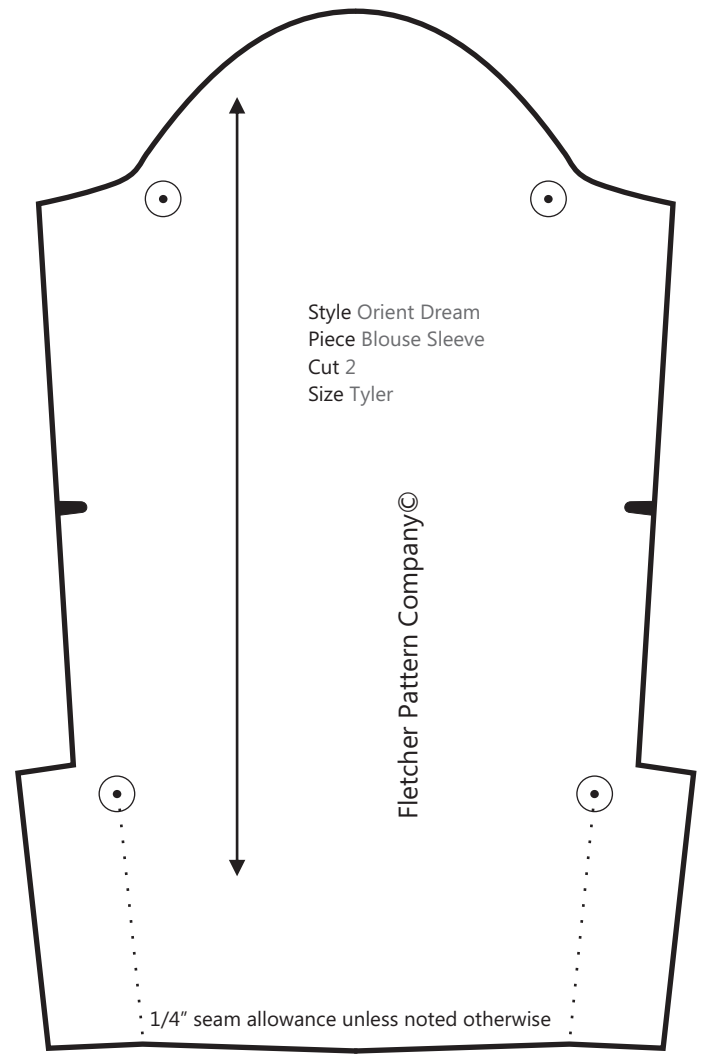
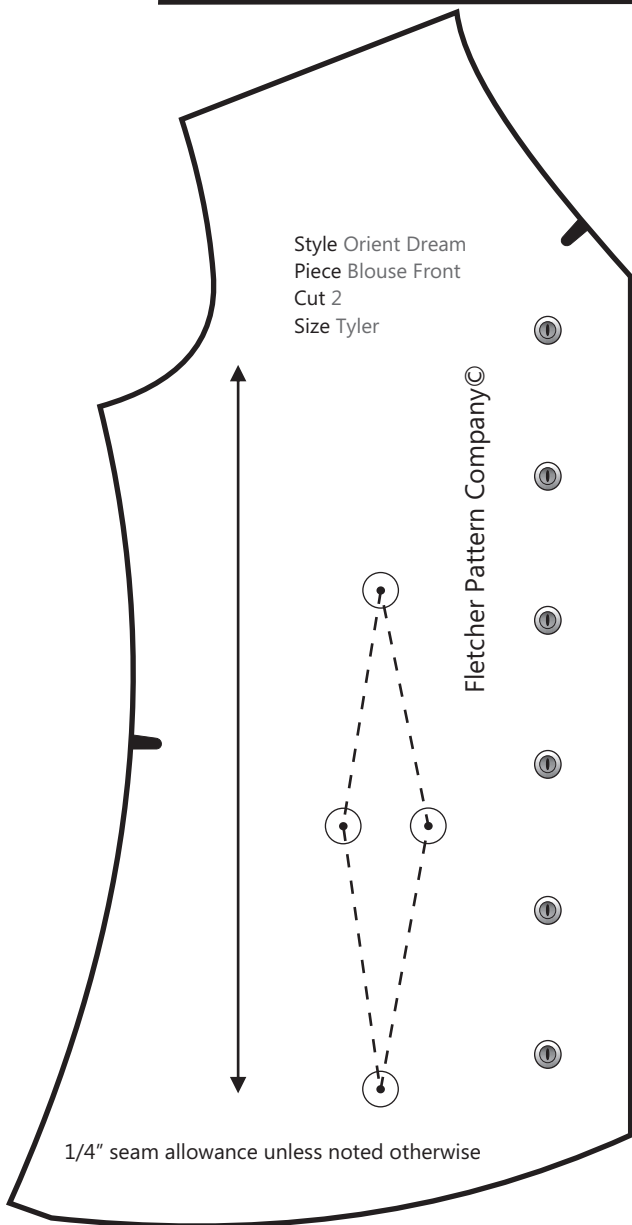
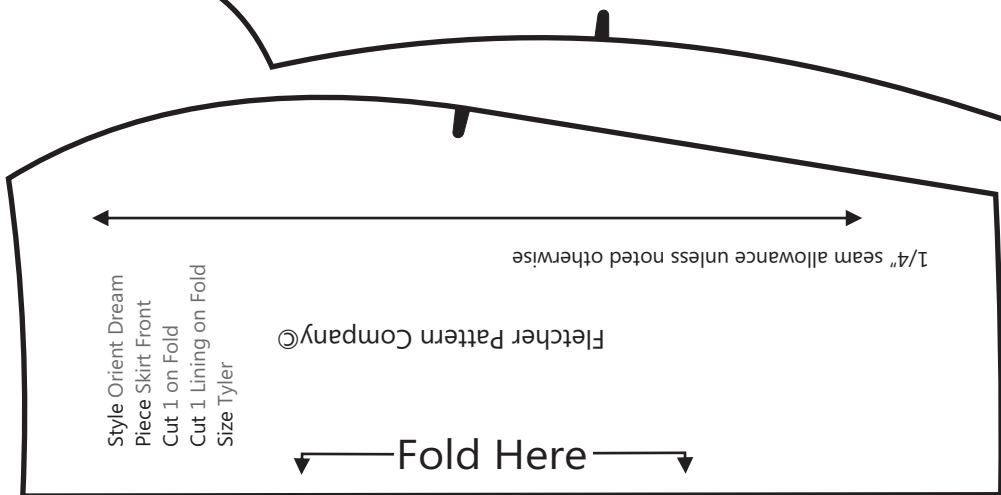
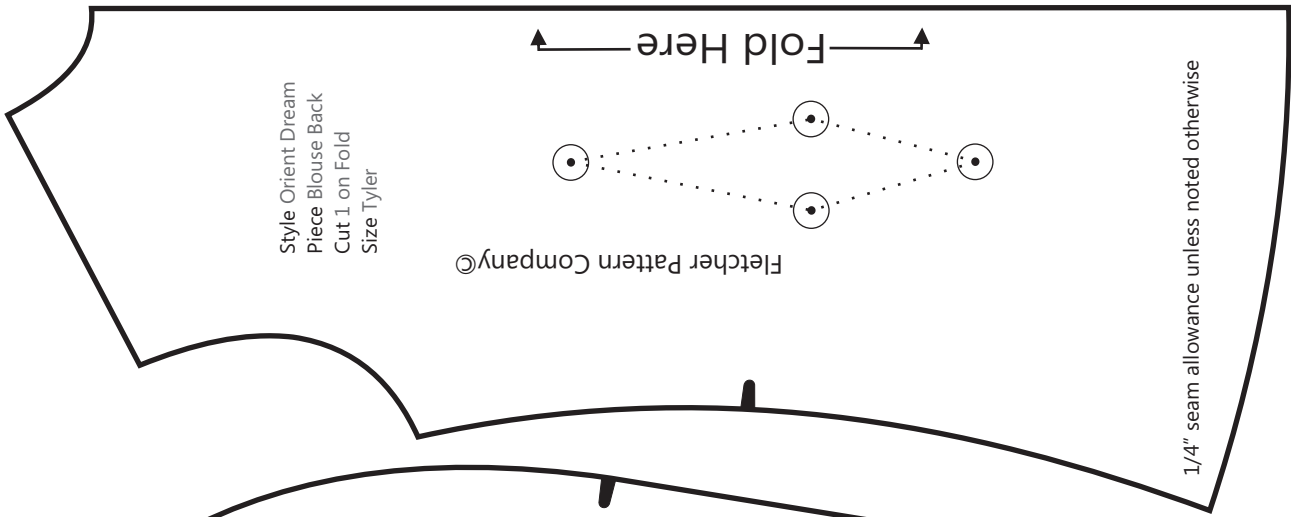
1. Cut 1 piece of 1" wide lace to a length of approx. 5 1/2". WST fold side raw edges of lace under 1/4" and hard press. Gather top edge of lace to a length of approx. 2 1/2". This will be used as the blouse collar. Set Lace to side
2. Cut 2 pieces of 1" wide lace to a length of approx. 4 1/2" each. WST fold side raw edges of lace under 1/4" and hard press. Gather top edge of lace to a length of approx. 2". These pieces will be used as the lace sleeve cuffs. Set Lace to side
3. RST, sew darts in blouse front, press darts to center. RST, sew darts in blouse back, press darts to center.
4. RST, sew raw shoulder edge of blouse front to raw shoulder edge of blouse back.
5. RST, sew gathered edge of lace collar to raw edge of blouse neckline center lace collar between notches.

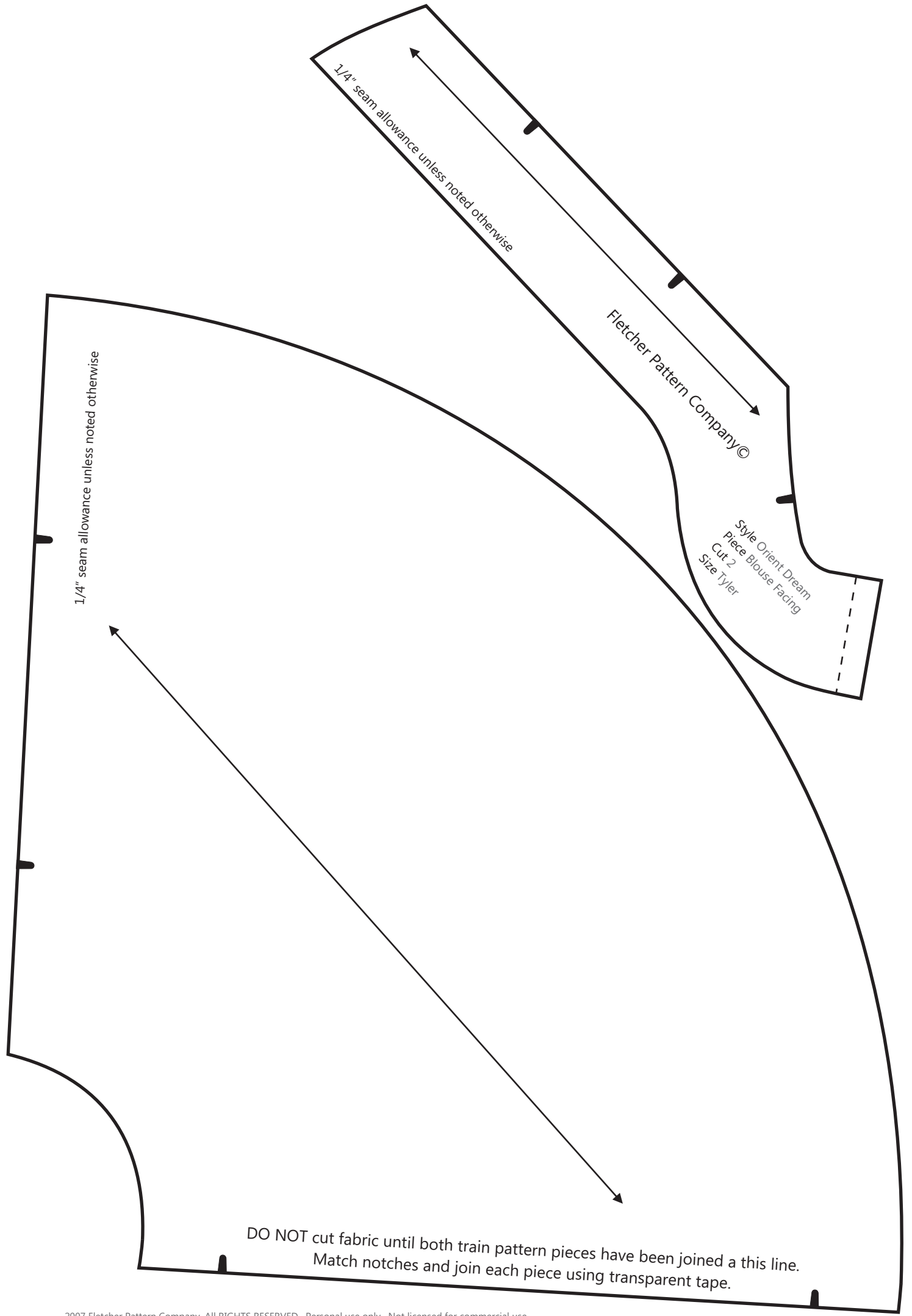
6. RST, sew blouse facings together along stitch line indicated on pattern. Press seam allowance open. RST, matching notches, sew blouse facing to blouse along front center and neckline of blouse. Clip corners and trim neckline seam allowance to 1/8". WST, fold facing over blouse and press along center front and neckline.
7. RST, position gathered raw edge of lace cuff to bottom raw edge of blouse sleeve, centering lace cuff between vent fold lines. WST, fold sleeve vents over lace. Sew along bottom raw edge of sleeve to secure vents and lace cuff in place.
8. Unfold sleeve vents and pull lace cuff downward to create the sleeve cuff.
9. Ease sleeve cap between dots indicated on sleeve pattern.
10. RST, sew sleeve cap to blouse armholes.
11. RST, matching notches, sew blouse front and sleeve front to blouse back and sleeve back, stopping at the doll where the sleeve vents begin.
12. WST, fold bottom raw edge of blouse under approx. 1/4" and hard press. It is advisable that you overlock this raw edge. From right side of blouse, secure hem into place by top stitching approx. 1/8" from folded edge. Optionally you may wish to secure hem using a blind stitch.
13. Using pattern markings as a guide position and secure 6 buttons to front center of blouse.
14. Position and mark placement for 3 snap sets to center front of blouse ensuring snaps are not visible when the blouse fronts are secured with the snaps.
15. Fit blouse to doll.

Skirt

16. RST, sew darts in skirt back. Press darts center. Repeat for lining.
17. RST, sew skirt backs together along center back raw edges, stopping at dot. Press seam allowance and zipper opening, open using fold lines on pattern as a guide. Repeat for lining.
18. Insert doll zipper into the skirt zipper opening using a hand or machine stitch. Detailed illustrated instructions for a simple machine method of setting zippers are available online at www.fletcherpatterncompany.com.
19. RST, matching notches. Sew skirt front to skirt back. Clip curves and press seam allowance open. Repeat for lining.
20. WST, fold bottom raw edge of skirt lining under approx. 1/4" and hard press.
21. RST, sew raw top edge of skirt lining to top raw edge of skirt.
22. RST, matching notches, sew train pieces together. Press seam allowance open. Slightly gather inner circle of train.
23. Using 6" wide tulle, gather top edge of tulle to a width of approx. the same diameter of train

- inner circle. Position gathered edge of tulle to train inner circle over lapping side edges of tulle.
24. WST, fold side raw edges of train overlay under approx. $\frac{1}{4}$ " and hand press. Gather inner circle of train overlay and position gathered edge of train overlay to inner circle of tulle and train. Stay stitch all three layers of train, tulle and train overlay together.
 25. RST, position gathered edge of train assembly to bottom raw edge of skirt and stay stitch into place with side seams of train matching side seams of skirt.
 26. Using waxed thread and needle, secure bottom folded edge of skirt lining to gathered edge of skirt when train and skirt meet. Gathered edges should be concealed between skirt and lining.
 27. Using waxed thread and needle, secure folded edge of skirt lining zipper opening to zipper tape ensuring stitches to not interfere with zipper operation.
 28. WST, fold bottom raw edge of train under approx. $\frac{1}{4}$ ". From right side of train secure hem by top stitching approx. $\frac{1}{8}$ " from folded edge.
 29. WST, fold bottom raw edges of train overlay under approx. $\frac{1}{4}$ ". From right side, secure hem into place by topstitching approx. $\frac{1}{8}$ " from folded edge.
 30. Fit skirt to doll. Using a clothes steamer, adjust and arrange the drape of the train for a professional finish.





1/4" seam allowance unless noted otherwise

Fletcher Pattern Company©

Style Orient Dream
Piece Blouse Facing
Cut 2
Size Tyler

1/4" seam allowance unless noted otherwise

DO NOT cut fabric until both train pattern pieces have been joined a this line.
Match notches and join each piece using transparent tape.

1/4" seam allowance unless noted otherwise

Fletcher Pattern Company©

Style Orient Dream
Piece Train Overlay
Cut 1 on Fold
Size Tyler

←—Fold Here—→

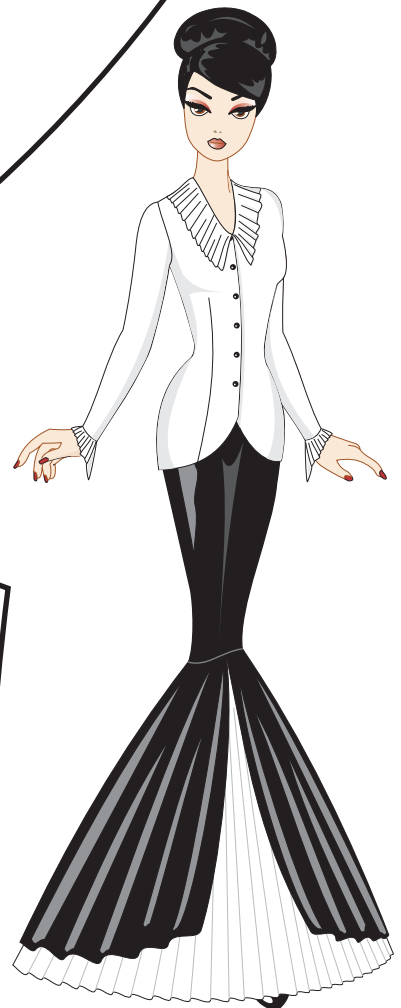
Fold Line
Stitch Line - - - - -
Grain Line ←————→
Notch ▴ Dot ⊙ Snap ⊗

Seam allowance of 1/4"
is already included in the
dimensions of the pattern

DO NOT cut fabric until both train pattern pieces have been joined a this line.
Match notches and join each piece using transparent tape.

Fletcher Pattern Company©

Style Orient Dream
Piece Train
Cut 2
Size Tyler



Style Orient Dream
Piece Skirt Back
Cut 2
Cut 2 Lining
Size Tyler

insert zipper