

A few notes about PDF patterns from Designs by Jude. . . .

This PDF pattern requires legal size paper (8.5" x 14") or A4 size paper (8.27" x 11.69", 210mm x 297mm). It will **not** print on standard letter.

Patterns containing larger pieces will need to be taped together before cutting out the fabric.

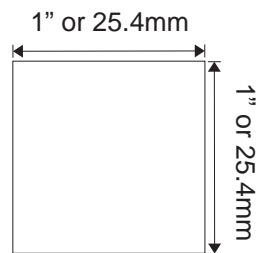
Be advised that this document needs to be printed to it's original scale. Please ensure that the printing options below are **not** selected.

Do Not: Rotate and Center, Fit to Page, Reduce to Fit or adjust the scale of this document.

Refer to the scale marker below to ensure that this copy is printed at the correct scale.

This PDF pattern is not licensed for commercial use and may not be shared, duplicated or distributed.

2016 Designs by Jude, All RIGHTS RESERVED. Personal use only. Not licensed for commercial use.



Designs by Jude

www.fletcherpatterncompany.com

Fortune Cookie

for Ellowyne



Ew131
\$12.95 US

2011 Designs by Jude, All RIGHTS RESERVED. Personal use only. Not licensed for commercial use.

Designs by Jude
Fortune Cookie
For Ellowyne

Basic Instructions

- Use a ¼" seam allowance unless noted otherwise on the pattern piece or instructions. This seam allowance is already included in the dimensions of the pattern.
- Press the garment as you work through each step. Press seams open where applicable.
- In un-lined garments, finish raw edges with an over-lock or zigzag stitch.

Note that RST = Right Sides Together and WST = Wrong Sides Together.

Cheongsam

- Fold upper right edge of dress along seam line and press.
- With right sides up, lap dress over upper right of dress. Pin in place. Topstitch 1/8" from folded edge.
- Sew darts in dress front. Sew darts in dress back sections. Press darts to the center.
- Sew dress back sections to the front section at the shoulder seams. Press seams open.
- Baste neck edge.
- RST sew collar sections together, leaving neck edge open. Clip seams, turn and press.
- Baste raw edges together.
- Sew collar sections together at center front.
- Pin collar to dress, matching centers, sew in place. Clip seam, press seam down.
- Hem sleeve edge by turning edge under ¼", press and topstitch.
- Run a gather stitch at sleeve cap.
- RST pin sleeve to armhole opening. Ease top of sleeve and sew in place.
- Sew front section to back sections at the underarm and side seam. Stop at side dot.
- Sew center back seam from hem to dot.
- Zigzag or serge both back openings.
- Fold right back opening under ¼". Fit to doll. Mark snap placement. Apply snaps.
- Hem lower edge

Cheongsam Blouse

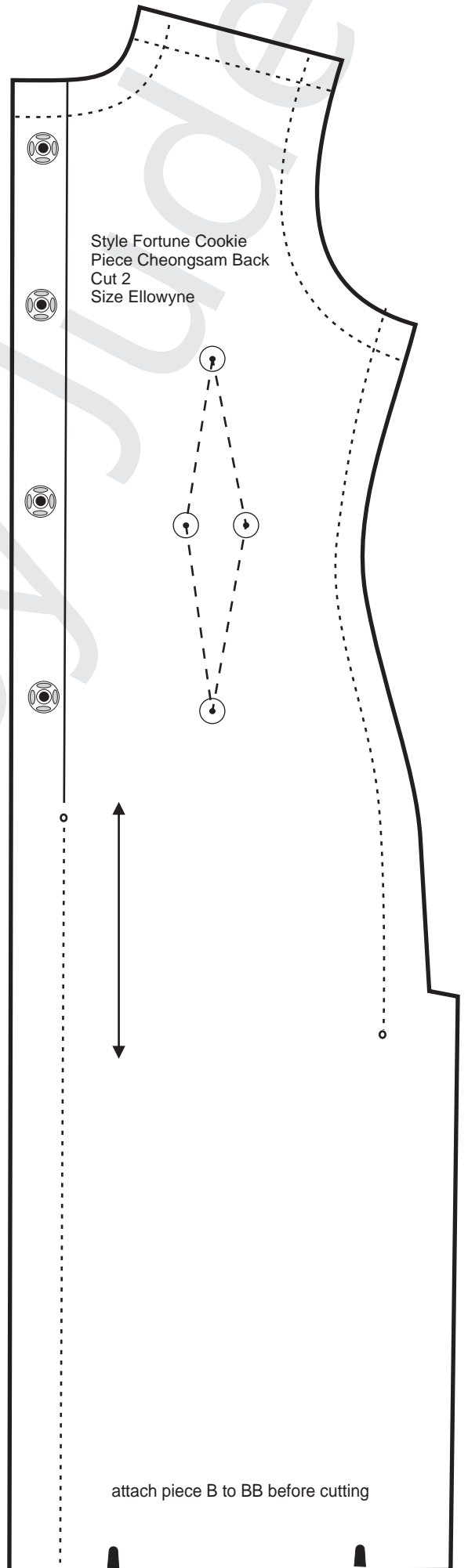
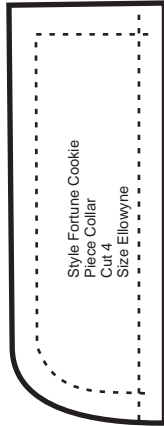
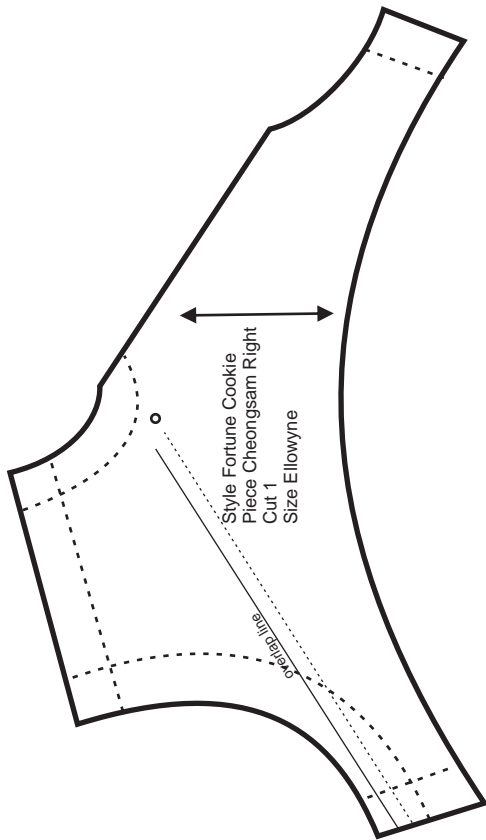
- Fold upper right edge of dress along seam line and press.
- With right sides up, lap dress over upper right of dress. Pin in place. Topstitch 1/8" from folded edge.
- Sew darts in dress front. Sew darts in dress back sections. Press darts to the center.
- Sew dress back sections to the front section at the shoulder seams. Press seams open.
- Baste neck edge.
- RST sew collar sections together, leaving neck edge open. Clip seams, turn and press.
- Baste raw edges together.
- Sew collar sections together at center front.
- Pin collar to dress, matching centers, sew in place. Clip seam, press seam down.
- Hem sleeve edge by turning edge under ¼", press and topstitch.
- Run a gather stitch at sleeve cap.
- RST pin sleeve to armhole opening. Ease top of sleeve and sew in place.
- Sew front section to back sections at the underarm and side seam. Stop at side dot.
- Sew center back seam from hem to dot.
- Zigzag or serge both back openings.
- Fold right back opening under ¼". Fit to doll. Mark snap placement. Apply snaps.
- Hem lower edge

Pants

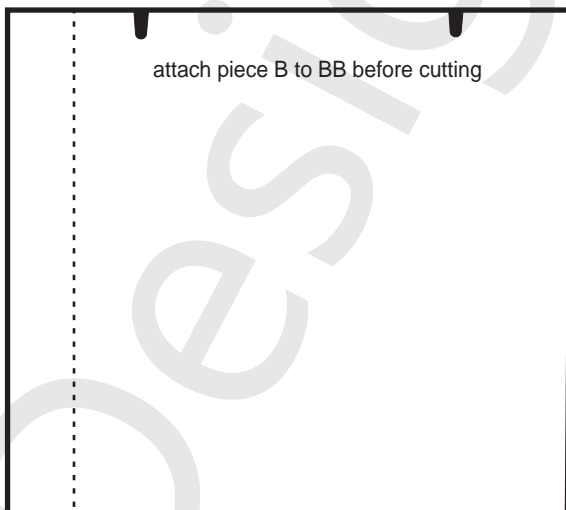
- With right sides together sew center front seam, clip curve.
- To form casing, fold upper edge in at the fold line and top stitch.
- Hem pant legs.
- Cut a 6 1/2" piece of 1/8 inch or ¼ inch elastic, slip through casing, fit to doll and secure ends by sewing in place.
- With right sides together, sew center back seam, clip curve.
- With right sides together, sew inner leg seam, clip, turn and press.

Fortune Cookie

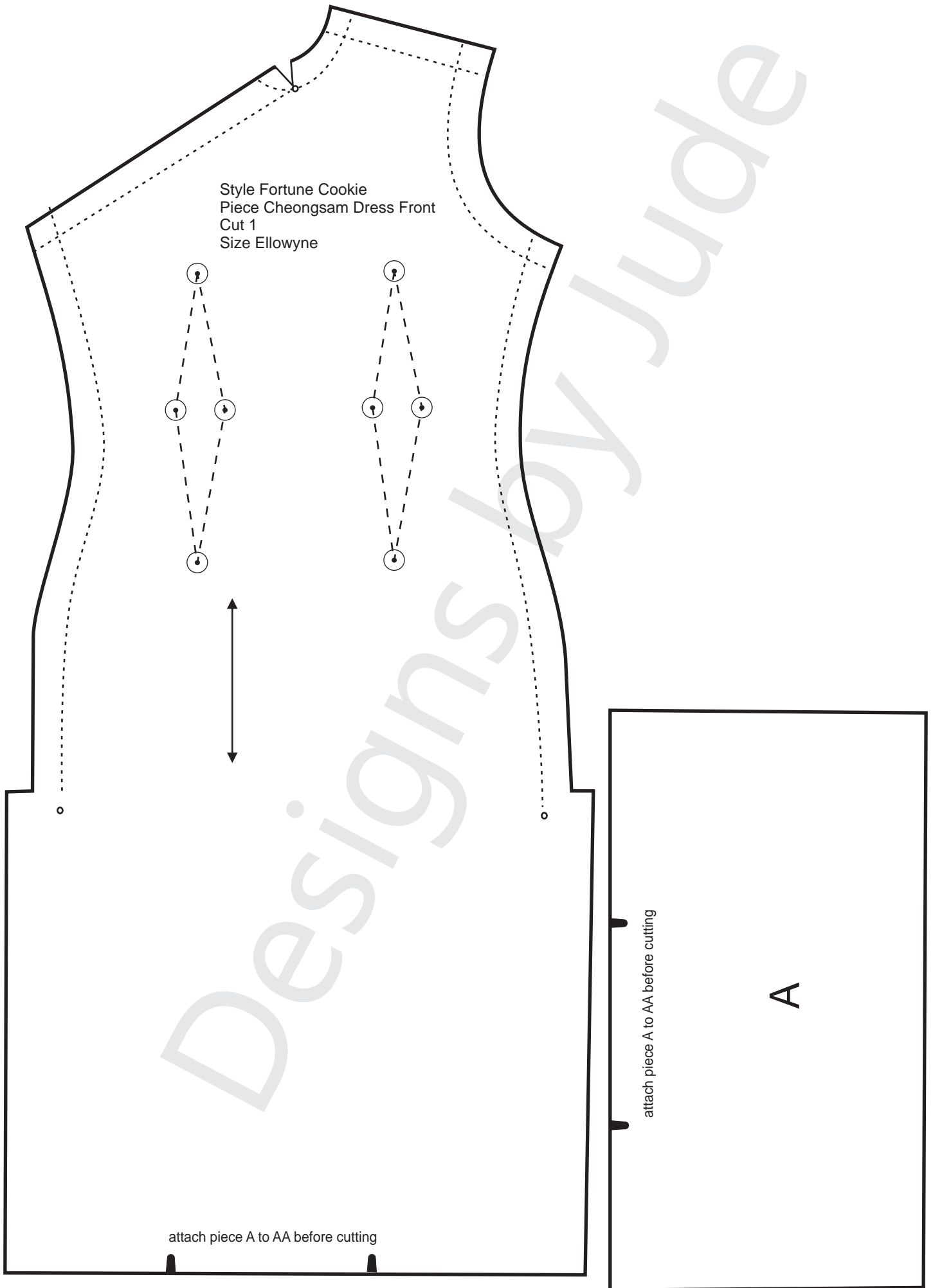
for Ellowyne

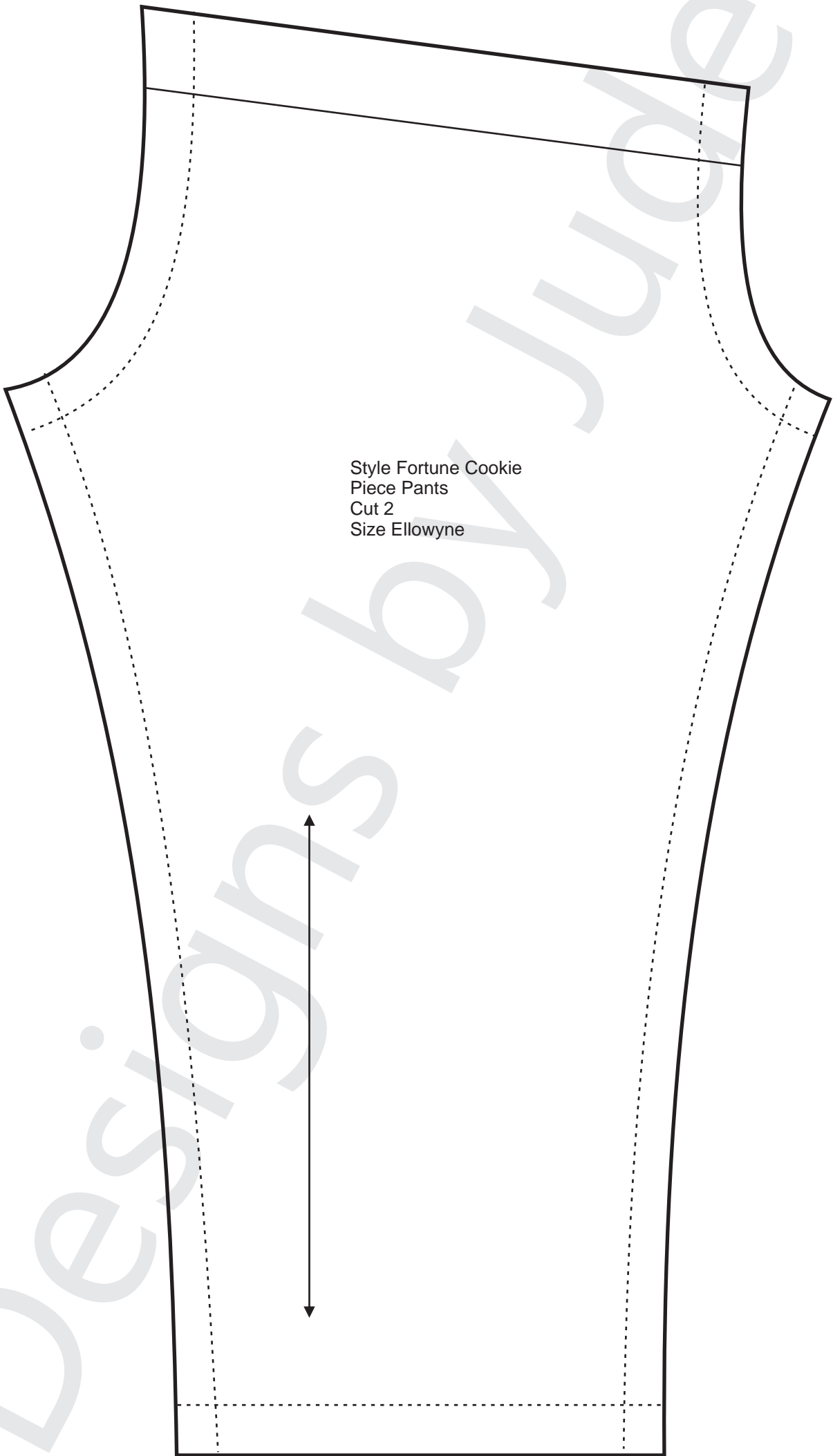


Fold Line
 Stitch Line - - - - -
 Grain Line ↔
 Notch ● Dot ⊙ Snap ☉
 Seam allowance of 1/4" is already included in the dimensions of the pattern

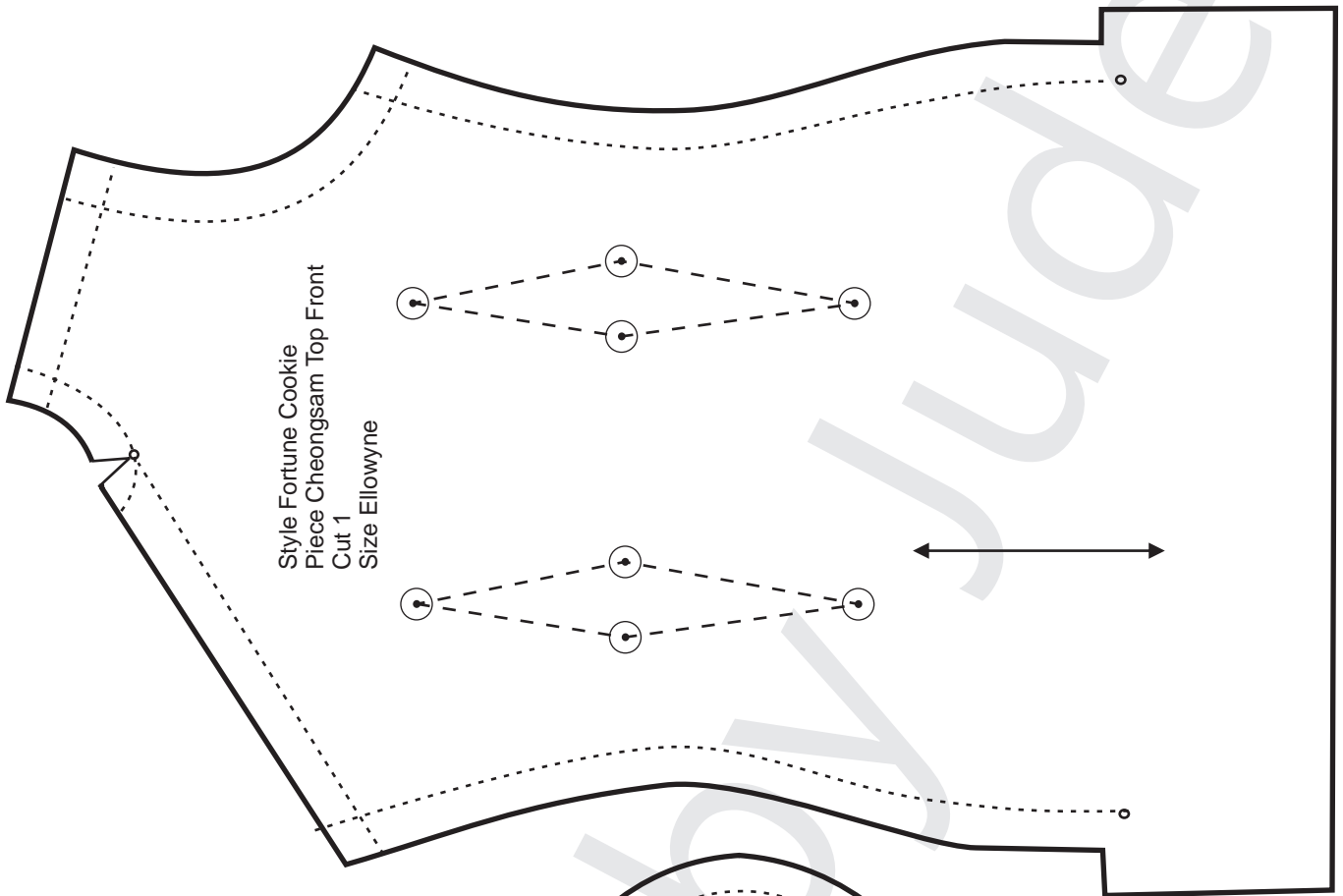


attach piece B to BB before cutting

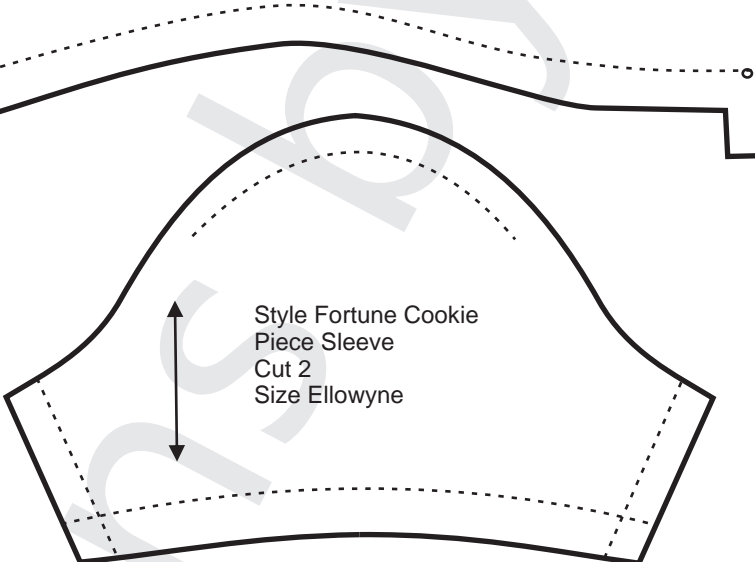
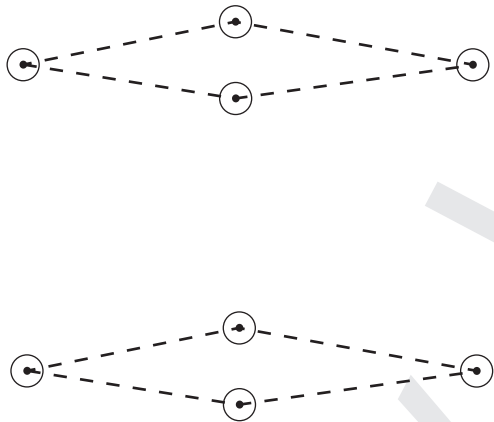




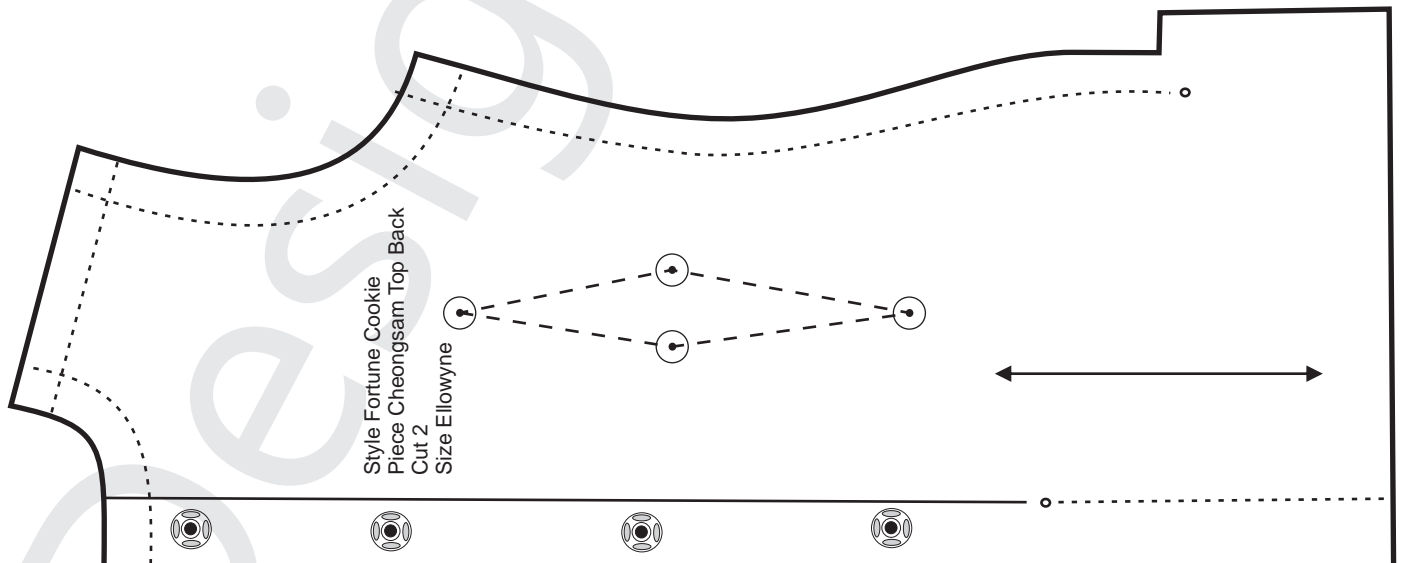
Style Fortune Cookie
Piece Pants
Cut 2
Size Ellowyne



Style Fortune Cookie
Piece Cheongsam Top Front
Cut 1
Size Ellowyne



Style Fortune Cookie
Piece Sleeve
Cut 2
Size Ellowyne



Style Fortune Cookie
Piece Cheongsam Top Back
Cut 2
Size Ellowyne

